



*What a load of rubbish!*

# The problem of Marine Litter and how you can help.



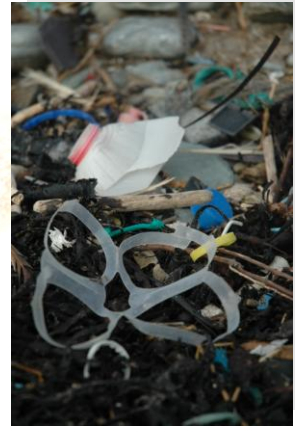


# The Problem

Plastic makes up over half the litter that is found on British beaches!

Over 170 species of animal have been known to mistake plastic for food. These animals include turtles, seabirds and whales.

By eating the plastic these animals can die from starvation, poisoning or blockages preventing them from eating.



It takes plastic hundreds of years to break down, but even then it does not disappear— instead it stays in the sea as tiny particles which build up to dangerous levels inside the animals as they eat.



# The Problem



Discarded fishing line and nets can also injure animals such as birds and seals— sometimes they even drown through entanglement.



**A third of litter that is found on beaches in the UK is from beach users.**

Other forms of litter commonly found on British beaches include: Glass, cotton buds, sweet wrappers, rubber, oil drums and crates.



# The Solution



A large number of volunteers take part in locally organised beach cleans both above and below the waterline each year. These events remove tonnes of litter from the beach making it cleaner, healthier

and safer for both people and wildlife. They also allow groups to monitor the amount of rubbish and where it is coming from.

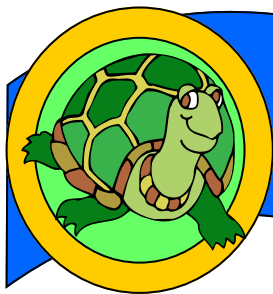
However to really get to the source of the problem we need to look at where the rubbish is coming from

and tackle the problem there. By reducing our reliance on products such as plastic bags we can reduce the amount that can potentially cause harm to the environment

There are lots of awareness raising campaigns all over the country with plenty of advice and information to help the general public change to a more

sustainable lifestyle. For contact details of some of these groups see the back of this booklet.





# What can you do?

1. Reduce, Reuse and Recycle.
2. Use the bins provided or take your litter home with you and throw it away appropriately.
3. Pick up after your dog.
4. Find out more about local adopt a beach schemes or beach clean events.
5. Don't throw items such as cotton buds and sanitary waste down the toilet.
6. Report fly-tipping and dangerous waste to your local council.
7. Don't pick up other peoples rubbish unless you are taking part in a beach clean event with appropriate protection.





# Breakdown Challenge

Match up the item to the amount of time it takes to breakdown naturally. The answers are on the back page.

**Aluminium can**

**2 years**

**Tin can**

**6 months**

**Cigarettes**

**Never**

**Orange peel**

**80-100 years**

**Plastic bottle**

**1 million years**

**Glass bottle**

**50-80 years**

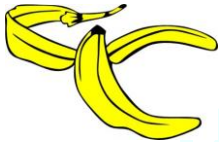
**Paper**

**12 years**



# Reduce, Reuse, Recycle

See if you can figure out which items belong in each box—remember some items might go into more than one!





# More Information

## North East Wales Wildlife

17 Nant Alyn Rd, Rhydymwyn, Mold, Flintshire. CH7 5HQ.

01325 742115. [info@newwildlife.org.uk](mailto:info@newwildlife.org.uk).

[www.newwildlife.org.uk](http://www.newwildlife.org.uk)

## Other information sources

### WDCS

[www.wdcs.org.uk](http://www.wdcs.org.uk)

### DEFRA

[www.defra.gov.uk](http://www.defra.gov.uk)

### MCS

[www.mcs.org](http://www.mcs.org)

### Keep Wales Tidy

[www.keepwalestidy.org](http://www.keepwalestidy.org)

## Marine Awareness North Wales Wildlife Trust

[www.northwaleswildlifetrust.org.uk](http://www.northwaleswildlifetrust.org.uk)

## Answers

### Reduce, reuse, recycle

**Food waste**– reduce & recycle as compost

**Toys**– re-use at a charity shop or with friends and family

**Books**– re-use at a charity shop or with friends or family

**Clothes**– Re-use at a charity shop or with friends or family

**Bikes**– Recycle parts if old, or Re-use at a charity shop or with friends or family

**Batteries**– Recycle or buy rechargeable which you can re-use

**Glass bottles**– recycle

**Plastic bottles**– reduce, recycle or re-use (make bird feeders out of them).

**Glasses**– re-use (some opticians collect old glasses for overseas charities).

**Mobile Phones**– Re-use at a charity shop or with friends or family, some charities accept them.

**Electrical equipment**– re- use if possible, if not recycle at nearest recycling centre.

**Shoes**- Re-use at a charity shop or with friends or family or put in special recycling bins in town centres.

## Breakdown challenge

Aluminium can: 80 – 100 years

Tin cans: 50 – 80- years

Cigarettes: up to 12 years

Orange peel: 6 months

Plastic bottles: never

Glass bottles: 1million years

